

Huvitz

Distributed by:



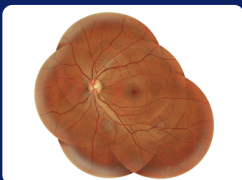
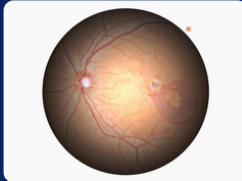
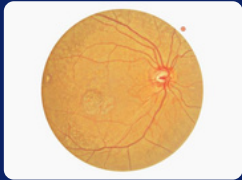
FUNDUS CAMERA

HFC-1

A PC-integrated system designed for advanced retinal imaging and efficient analysis. It delivers high-resolution images, automatic pupil and flash adjustments, and a panorama function for comprehensive retinal overviews, enabling accurate diagnosis and detailed visualization.



FEATURES:



- **Customizable Fundus Modes:**

- Offers four different color imaging options, allowing clinicians to choose the tone that best fits their diagnostic approach for clearer visualization of retinal vessels and structures.

- **Enhanced Lesion Detection:**

- Fine-tune brightness and contrast with Central BR and Gamma controls to highlight subtle abnormalities that might otherwise be overlooked.

- **High-Resolution True Color Imaging:**

- With 12-bit depth and advanced gamma correction, it delivers natural, distortion-free fundus images that accurately balance contrast across both dark retinal regions and bright optic discs, capturing even fine microvasculature.

- **Wide-Angle Panoramic Imaging:**

- Automatically aligns and merges up to seven fundus images into a single, high-resolution panoramic overview, making it easier to evaluate lesion size, location, and extent at a glance.

- **Accurate Comparative Analysis:**

- Comprehensive reporting tools enable clinicians to compare pre- and post-treatment images, track disease progression, and analyze retinal health from multiple perspectives for better clinical decision-making.



CONTACT US

envieye.com | 833-627-0546
sales@nextvision2020.com