



Envi Essentials:

**QUALITY**

delivered with  
the support you  
deserve.



[envieye.com](http://envieye.com)



## The Envi Family of Ophthalmic Exam Chairs

Each **Envi** chair was custom designed and built to serve the needs of the eye care provider based on the industries most used and requested features. The Envi line of chairs brings together unmatched **quality** and **affordability** in a contemporary package.



The S1-AR, S1-TC, & S1-MC models are available for purchase in black, blue, or charcoal diamond stitched upholstery.



# Envi S1-AR (Full Power Chair)

- Folding footrest with spring assist
- Footswitch with up/down controls
- High quality and durable upholstery
- Customizable upholstery colors available
- Adjustable headrest with easy lock and unlock
- Armrests go up and down with chair when reclining
- Complete automatic power chair (up/down, recline back/forward, and auto)
- Chair rotates 180 degrees with foot lock on the backside of chair
- Chair base comes standard in white to match Envi S1-S Instrument stand
- Easily accessible soft-touch buttons on both sides of the chair



## Technical Specifications:

- Chair base: 21" x 23.75"
- Height in lowest position: 23.6"
- Height in highest position: 31.5"
- Length when fully reclined: 65"
- Lifting capacity: 500 lbs



# Envi S1-TC (Tilt Chair)

- Complete power chair (up/down)
- Chair up/down operated from side with soft-touch buttons
- Chair tilt control located on handle on back of the chair
- Adjustable headrest with easy lock and unlock
- Footswitch with up/down controls
- Chair rotates 180 degrees with foot lock on the backside of chair
- Folding footrest with spring assist
- High quality and durable upholstery
- Customizable upholstery colors available
- Chair base comes standard in white to match Envi S1-S Instrument stand



## Technical Specifications:

- Chair base: 21" x 23.75"
- Height in lowest position: 23.6"
- Height in highest position: 31.5"
- Length when fully reclined: 65"
- Lifting capacity: 500 lbs



# Envi S1-MC (Manual Recline Chair)

- Power chair (up/down)
- Chair up/down operated from foot pedal
- Chair recline control located on handle on back of the chair
- Adjustable headrest with easy lock and unlock
- Chair rotates 180 degrees with handle lock on side of chair
- Folding footrest with spring assist
- High quality and durable upholstery
- Customizable upholstery colors available
- Chair base comes standard in white to match Envi S1-S Instrument stand



## Technical Specifications:

- Chair base: 21" x 23.75"
- Height in lowest position: 23.6"
- Height in highest position: 28"
- Length when fully reclined: 60"
- Lifting capacity: 500 lbs



# Envi S1-MPC (Procedure Chair)

The Envi S1-MPC represents a versatile chair designed for screening rooms, laser procedure rooms, and adaptable for use as a "micro" exam lane when paired with the Envi Switch. Engineered with an electric power base and a corded foot pedal, it facilitates seamless height adjustments. Moreover, the S1-MPC model prioritizes patient comfort with the inclusion of handrails and a footrest, optimizing procedural experiences. Its spacious upholstered backrest, capable of both vertical and horizontal adjustments to accommodate individual preferences and needs effectively.

## Technical Specifications:

- Chair base: 21" x 23.75"
- Height in lowest position: 20"
- Height in highest position: 28"
- Lifting capacity: 500 lbs





# Envi Switch

The Envi Switch is a versatile stand that was custom designed and built to fit any practice size and tailors to the needs and wishes of any physician. The Switch is capable of the smallest footprint in the industry when paired with any Envi chair. It is also capable of serving as a stand-alone unit when fit into its custom baseplate. Switch it up with multiple configurations, unique add-ons, and practical storage.

## Features:

- 3 charging wells and instrument tray
- Soft touch button controls for power of stand, slit lamp, overhead lamp, binding post, and two auxiliary inputs
- Control up/down of chair from slit lamp arm
- One hand operation of slit lamp arm
- Refractor arm with additional 3rd arm available
- LED Overhead lamp

## Technical Specifications:

- Base size: 23.6" x 20.8"
- Total height of unit: 84.6"
- Slit lamp arm vertical range: 12"
- Slit lamp arm weight capacity: 80 lbs
- Phoropter vertical range: 10"





**36" or 40" Footprint**  
Left or Right handed setup





Multidirectional/dimmable LED overhead lamp with 360° rotation with lamp switch on slit lamp arm.

## Technical Specifications:

- Base size: 12" x 24"
- Base size (with baseplate): 21.5" x 24"
- Total height of unit: 76"
- Slit lamp arm weight capacity: 80 lbs
- Phoropter vertical range: 10"



Paired with Envi S1-MC chair with secure anchoring rod for an edge-to-edge footprint of 36"



# Envi S1-S

The Envi S1-S was custom designed and built based on the industries most used and requested features. The S1-S was designed to work flawlessly with the Envi line of chairs. With easy access to chair control as well as three charging wells on the console, the Series S1-S is the perfect solution to serve the needs of the eye care professional.

## Features:

- LED Overhead lamp
- 3 charging wells and instrument tray
- Soft touch button controls for power of stand, slit lamp, overhead lamp, binding post, and two auxiliary inputs
- One hand operation of slit lamp arm
- Control up/down of chair from slit lamp arm
- Refractor arm with additional 3rd arm available

## Technical Specifications:

- Base size: 23.6" x 20.8"
- Total height of unit: 84.6"
- Slit lamp arm vertical range: 12"
- Slit lamp arm weight capacity: 80 lbs
- Phoropter vertical range: 10"





# Envi MP-125/MP-135 Manual Phoropter

## Auxiliary Lenses:

- RL: Red lens.
- GL: Green lens.
- OC: Occuluder
- O.Q: Open aperture
- R: Retinoscopic lens; +1.50 diopter spherical lens (for 67cm)
- P: Polarizing filter
- RMV: Red Maddox rod is set vertically.
- RMH: Red Maddox rod is set horizontally.
- WMV: White Maddox rod is set vertically.
- WMH: White Maddox rod is set horizontally.
- +.12: +.12 diopter spherical lens. Spherical power can be set by 0.12 diopter.
- PH: A 1mm diameter pinhole is provided.
- 6 U: 6 diopter base up prism.
- 10I: 10 diopter base in prism.
- +.50: +0.5 diopter cross cylinder with horizontal plus(+) axis.



## Range of Measurement:

- P.D.: 48 to 75mm by 1mm step
- Myopia: 0 to -19.00 diopter in 0.25 diopter step
- Hyperopia: 0 to +16.75 diopter in 0.25 diopter step
- Astigmatism: 0 to -6.00 diopter (-8.00 diopter) in 0.25 diopter step
- Phoria and vergency: 20 to 0 to 20 by 1 step; Inner 40; Outer 40(50); Upward and downward 40(46)
- Near vision test: Main optical axes of both lenses converges by means of a tilt mechanism at 40cm in front of the eyes at 64mm P.D. If P.D. for far vision is less than 54mm, converging operation stops.
- Binocular balance test: Rotary prism and polarizing lens methods are available.

## Reading Card Lights



## Models Available:

- Envi MP-125 (Minus Cylinder)
- Envi MP-135 (Plus Cylinder)



# Envi HSL-20

The Envi HSL-20 is an advanced slit lamp microscope designed for performance, reliability, and patient comfort, in a cost-effective package. High-quality optics result in excellent image quality and resolution. The HSL-20 features light tower LED illumination and two-step magnification.



## Technical Specifications:

Type	Converging optics
Magnification Style	2 steps by objective lens rotation
Magnifications	10x, 16x
Eyepiece	10x
PD Adjustment	52mm-78mm
Diopter Adjustment	-8D - +5D
Slit Width	Continuous from 0mm to 14mm
Slit Height	Continuous from 1mm to 14mm
Aperture Diameter	14mm, 10mm, 5mm, 3mm, 1mm, 0.2mm
Slit Angle	0-180 degrees
Filters	Heat-absorbing, ND Filter, Red Free, Cobalt Blue
Slit Inclination	5, 10, 15, and 20 degree
Longitudinal Movement	110mm
Lateral Movement	110mm
Fine Base Movement	15mm
Vertical Movement	30mm
Fixation Bulb	LED



# Envi HSL-50

The Envi HSL-50 is an advanced LED slit lamp microscope designed for performance, reliability, and patient comfort, in a cost-effective package. High-quality optics result in excellent image quality and resolution. The HSL-50 features 5-step drum rotation for selecting the desired magnification setting (multi-mag).



## Technical Specifications:

Magnification Style	5-step drum rotation
Magnifications	6x, 10x, 16x, 25x, and 40x
Eyepiece	12.5x
PD Adjustment	55-78.5mm
Diopter Adjustment	-6D - +6D
Slit Width	Continuous from 0mm to 14mm
Slit Height	Continuous from 1mm to 14mm
Aperture Diameter	14mm, 10mm, 5mm, 3mm, 2mm, 1mm, 0.2mm
Slit Angle	0-180 degrees
Filters	Heat-absorbing, Red-free, Cobalt blue, Grey
Slit Inclination	5, 10, 15, and 20 degree
Longitudinal Movement	90mm
Lateral Movement	100mm
Fine Base Movement	15mm
Vertical Movement	30mm
Fixation Bulb	LED



# Envi ZSL-50

The Envi ZSL-50 is an advanced LED slit lamp microscope designed for performance, reliability, and patient comfort, in a cost-effective package. High-quality optics result in excellent image quality and resolution. The ZSL-50 features 5-step drum rotation for selecting the desired magnification setting (multi-mag).

## Technical Specifications:



Type	Galilean magnification, 13 degree binocular tube with converging optics
Magnification Style	Rotating drum
Magnifications	10x, 16x, 25x
Stereo Angle	13 degrees
Eyepiece	12.5x
PD Adjustment	55mm-78.5mm
Diopter Adjustment	-6D - +6D
Slit Width	Continuous from 0mm to 14mm
Slit Height	Continuous from 1mm to 14mm
Aperture Diameter	14mm, 10mm, 5mm, 3mm, 1mm, 0.2mm
Filters	Heat-absorbing, UV, Cobalt, and Red-free
Slit Inclination	5, 10, 15, and 20 degree
Longitudinal Movement	90mm
Lateral Movement	100mm
Fine Base Movement	15mm
Vertical Movement	30mm
Fixation Bulb	Green LED



# Envi Enview Imaging System

The Envi Enview Imaging System is a cutting-edge digital imaging slit lamp designed for superior performance, precise diagnostics, and user comfort. Featuring advanced optics and a 12-megapixel camera, it delivers unmatched image quality. Its LED illumination system and integrated eye illumination offer exceptional clinical viewing, while external LED capabilities ensure comprehensive imaging.



## Features:

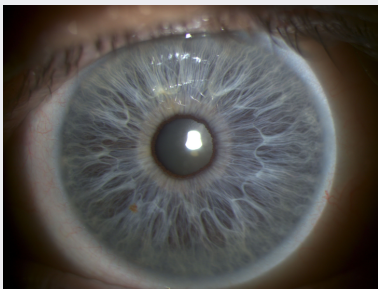
- 12-megapixel camera
- Innovative LED illumination system
- Meibomian gland imaging for Dry Eye assessment
- External LED for external photos
- Synchronous flash compensation
- Integrated infrared light
- Auto-recognition of magnification
- Auto-identification of left and right eyes
- Pre-set parameters for varying capture modes
- Capture button located on the joystick, one-handed operation is effortless.
- Precision machining ensures smooth and precise movements.
- DICOM 3.0 compatibility



# Envi Enview Imaging System



External Photo



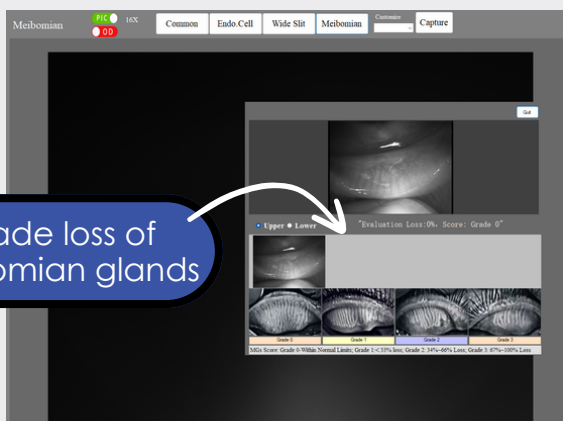
Meibomian Glands



## Technical Specifications:

Microscope Type	Galilean Type System
Magnification Changer	Revolving Drum
Magnification	6X, 10X, 16X, 25X, 40X
Eyepiece Magnification	12.5x
Visual Angle of Eyepiece	13°
PD Range	52mm-85mm
Visual Field Diameter	6X(33mm), 10X(22mm), 16X(14mm), 25X(8.5mm), 40X(5.5mm)
Illumination Type/Light Source	Tower Type, Warm LED
Illumination tilting	5°, 10°, 15°, 20°
Slit Width	0mm-14mm continuously adjustable
Slit Height	1mm-14mm continuously adjustable
Slit Angle	0°~180°continuously adjustable
Slit Aperture Size	0.2, 1, 3, 5, 10, 14mm
Filter	Heat Absorption, Grey, Red-Free (Green), Cobalt Blue, Yellow Filter (optional)

Grade loss of Meibomian glands





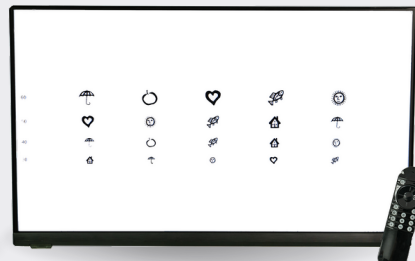
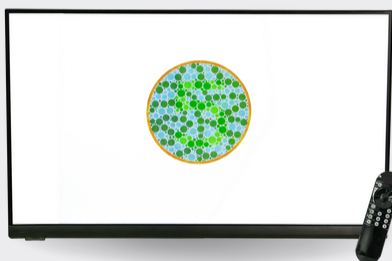
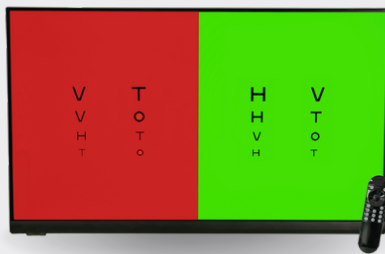
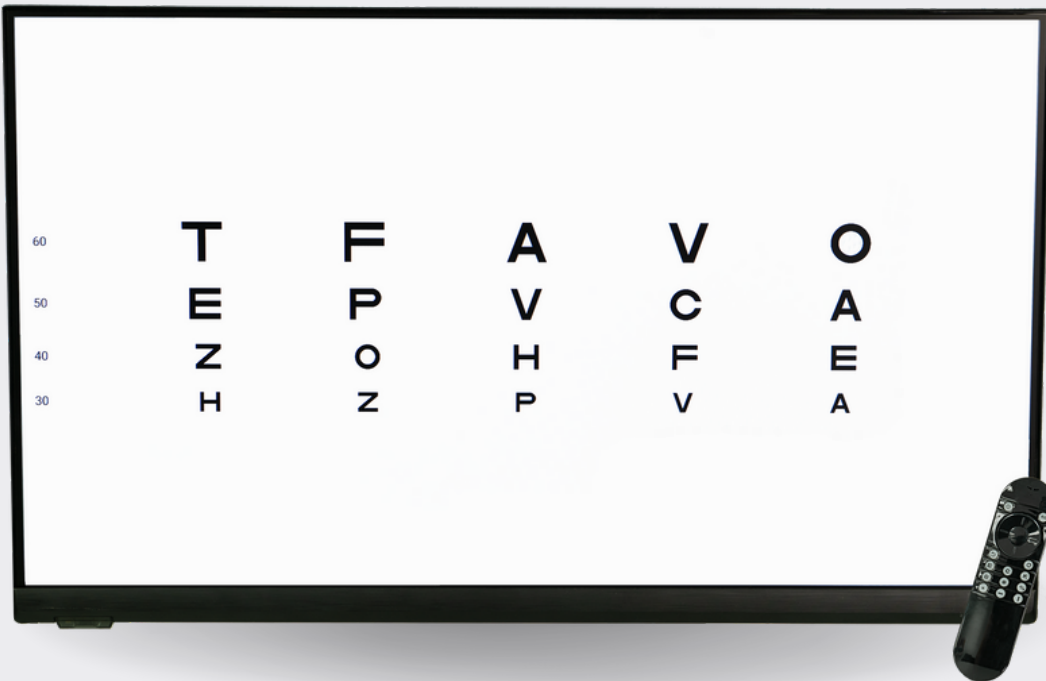


# Envi Elite Acuity Chart

The Envi Elite Acuity Chart comes fully equipped with all the necessary components for a standard acuity chart. The comprehensive kit comprises a Bluetooth remote, an HDMI device with software, a wall mount, and a high-definition monitor. The Envi Elite Acuity Chart is versatile, designed for use in both direct and mirrored exam rooms. Calibration is swift and user-friendly, providing expedited access to all charts and features.

## Features:

- Contrast
- Cross cylinder
- Tumbling E
- Allen symbols
- Numbers
- ETDRS
- HOTV
- Landolt C
- Astigmatism Wheel
- Duochrome screen (Red/Green)
- Sloan or Snellen Optotypes (20/400 - 20/10)
- Mirrored lane compatibility
- Randomized optotype presentation
- Import videos and images
- Ishihara screening (Color test)
- Single line, single letter, or groups of lines and letters
- 1, 3, or 5 Optotypes per line
- Worth 4-Dot
- Metric/Customary (6/6 or 20/20)





# Envi LM-10M

- LED Manual Lensmeter
- External power and axis reading
- 90° Inclination range
- Comes standard with prism compensator
- Target illumination switchable (Green/Standard LED)

## Technical Specifications:

Range of Diopter Measurement	0 Diopter - $\pm 20$ Diopter
Minimal Scale value	0.125D at 0D to $\pm 5$ D, .25 at $\pm 5$ D to $\pm 20$ D
Astigmatism Axis of Cylindrical Lens	0 to 180°, minimum scale value 5°
Prism Base Angle	0 to 180°, minimal scale value 5°
Regulation of Ocular Visibility	$\pm 5$ Diopter
Size of Lens	30MM to 90MM



# Envi LMA-20P

- Comes standard with Thermal Printer
- 5.6" full color touch screen that can be changed to black/white
- Wide range of measurement from -40D to +25D
- UV, Blue ray, and visible light transmittance measurement available
- Hartman Sensor enables measurement of a wide variety of lenses
- Auto calibration to calibrate fine errors during measurement
- Come standard with RS-232C and USB port for data transfer

## Technical Specifications:

Sphere	-40.00D - +25.00D
Cylinder(+, ±, -)	0 - +10.00D
Axis	0° - 180° (1° Steps)
ADD	0 - 10.00D
Prism(X-Y/P-B)	0-10▲



